



Security solutions
as individual as you are.



Product Datasheet



ievo micro™

FEATURES:

- Identification < 1 second
- Multispectral imaging sensor
- Spoof detection
- Great ergonomics for ease of use
- User friendly
- Long life piezo button
- LED accepted/denied indication built into button
- Audio beep indication
- Internal use only
- Unobtrusive design
- Wiegand output
- 1:N matching up to 8,000 users
- Integrates into existing card, fob & proximity systems
- Easy to install "plug and play system"
- Small PCB design
- Can be manufactured in any custom colour*
- Easy to use interface
- Networkable
- SDK for integrators and software developers

*Extra charges apply

ievo® has been designed after many years of research from a team of professionals who have been at the sharp end of biometric deployment, installation and integration. This wealth of knowledge has been obtained not only from industry experiences with the shortfalls of existing technologies, but also obtaining feedback from installers and end users.

Biometrics has proven time and time again to overcome all of the security issues that card and fob systems have, however, the cost of biometric systems coupled with the reliability issues have curtailed profits and industry growth. **ievo®** eradicates all of these existing issues and offers a quick, simple and cost effective resolve.

The newest offering, **ievo micro™** has been designed to seamlessly integrate into existing card and fob systems by utilising the original manufacturers controllers through the use of wiegand inputs. **ievo®** offers installers the opportunity to offer a reliable and superior biometric product to all of its new and existing clients.

ievo® has combined many unique features offering a large number of outcomes and benefits. **ievo micro™** uses multispectral imaging combined with a superior award winning algorithm.



BENEFITS:

USER FRIENDLY

ievo® is quick, clean and an efficient access control reader which increases footfall, a must for all access control systems. It boasts an audio automated indicator which means training becomes less hassle for you.

MULTISPECTRAL IMAGING SENSOR

The **ievo®** sensor technology will successfully scan the fingerprint image through levels of dust, dirt, oils, creams and even some latex gloves.

INTERNAL USE ONLY

ievo micro™ has been designed for internal use only.

MULLION MOUNTABLE

ievo micro™ is small enough to fit most door frames, making it the ideal reader to install in homes, offices and apartments.

INTEGRATES INTO EXISTING CARD, FOB & PROXIMITY SYSTEMS

ievo® has been designed to integrate seamlessly into existing card and fob systems by utilising the original manufacturers controllers through the use of wiegand inputs and outputs. **ievo®** provides installers with the opportunity to offer a reliable and superior biometric product to both new and existing clients. **ievo micro™** seamlessly integrates into other access control manufactures including; Paxton, Stanley, Nortech, ACT, BSB, Inner-Range, Honeywell, CDVI and PLAN.

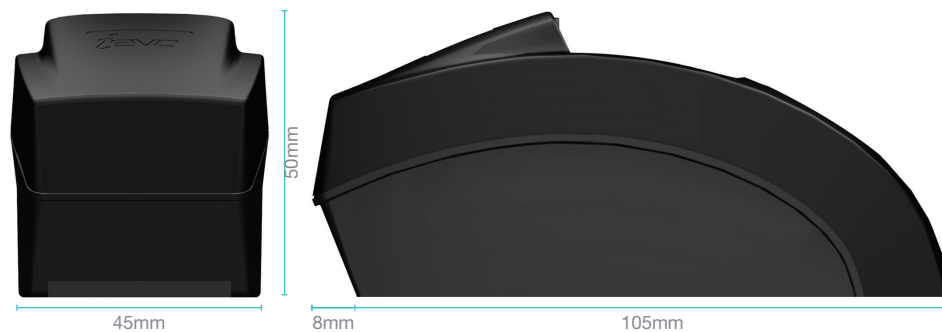
READER HOLDS NO DATA - PCB IS HOUSED INTERNALLY

Most competitor biometric access control products have built in controller/relays. These can be easily removed from the wall and entrance gained by shorting the relay. This is not how a security product should work. The **ievo®** reader contains no controllers or relays - **ievo®**'s matching board is housed internally.

CAN BE MANUFACTURED IN ANY CUSTOM COLOUR

Maintaining our 'aesthetically pleasing' promise, we can match the casing to any RAL number - ensuring that **ievo®** will fit perfectly into any surroundings.

DIMENSIONS:



MSI FINGERPRINT IMAGE QUALITY CONDITIONS:

	Dry	Wet	Dirty	Elderly	High levels of Ambient light
ievo					
Other Biometric Readers			NO IMAGE		NO IMAGE

TECHNICAL DATA:

CPU	ARM9
Memory	RAM 16mb FLASH 32mb
FRR	< 0.1%
FAR	< 0.00001%
Identification Speed	< 0.2 sec
Template Capacity	1:N 8000
Log Capacity	200,000
Voltage	12v DC
Current Draw	< 400mA
Output	Wiegand
Communication	TCP/IP IEVO/ controller OEM dependent
Operating Temp.	0~60°C (32~140°F)
Power Indicator	LED in Piezo Button
Certifications	CE, FCC, RoHS, Weee, Reach
Dimensions	W: 45mm H: 105mm (113mm) D: 50mm

To find out more, visit:

www.ievoreader.com

email us at:

info@ievoreader.com

or give us a call on:

0845 643 6632